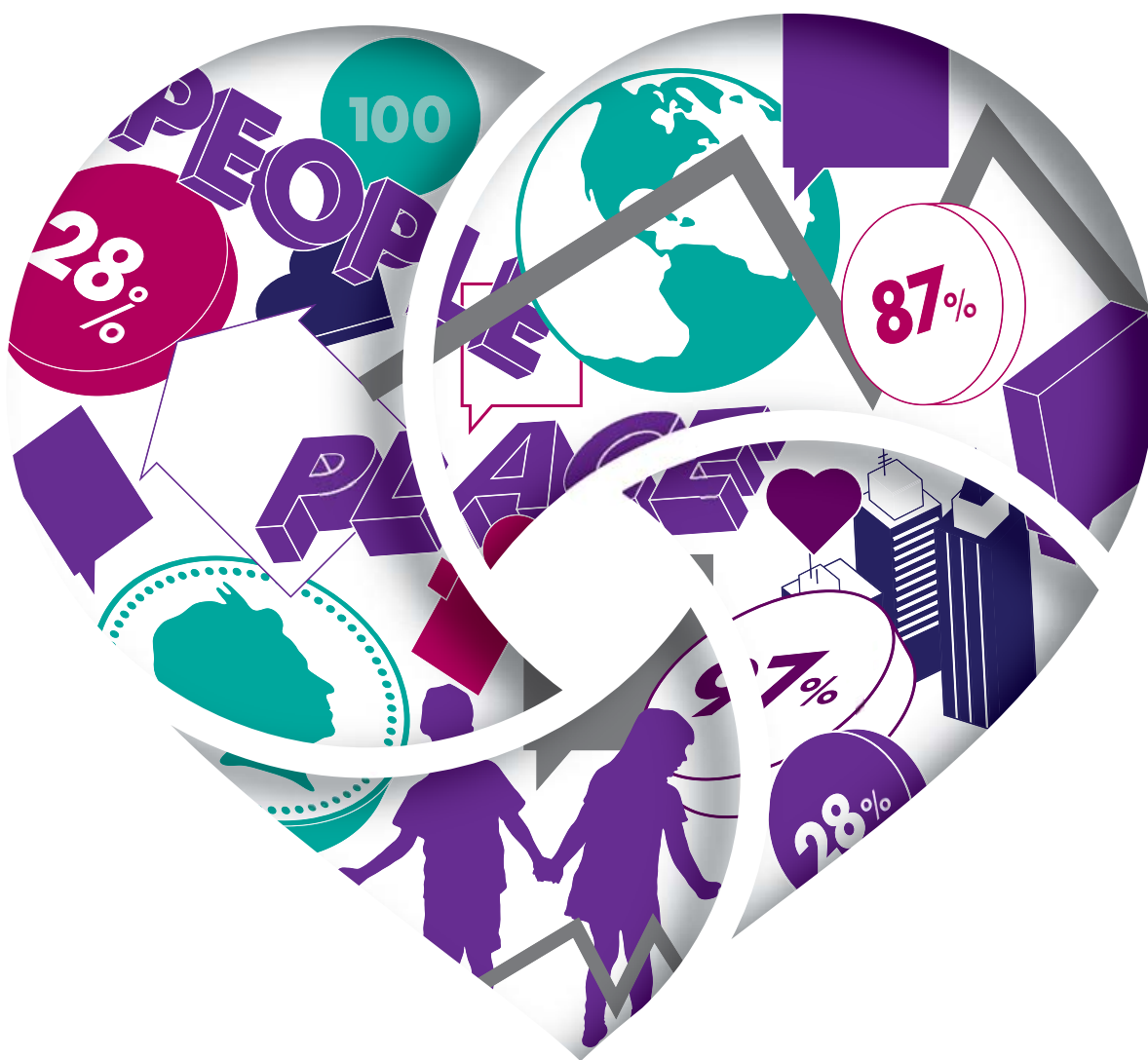


# REIGATE AND BANSTEAD COMMUNITY FUND

## PROPOSAL



# CONTENTS

**Proposal**

Page 3

**Type of Fund and Criteria**

Page 4

**Benefits**

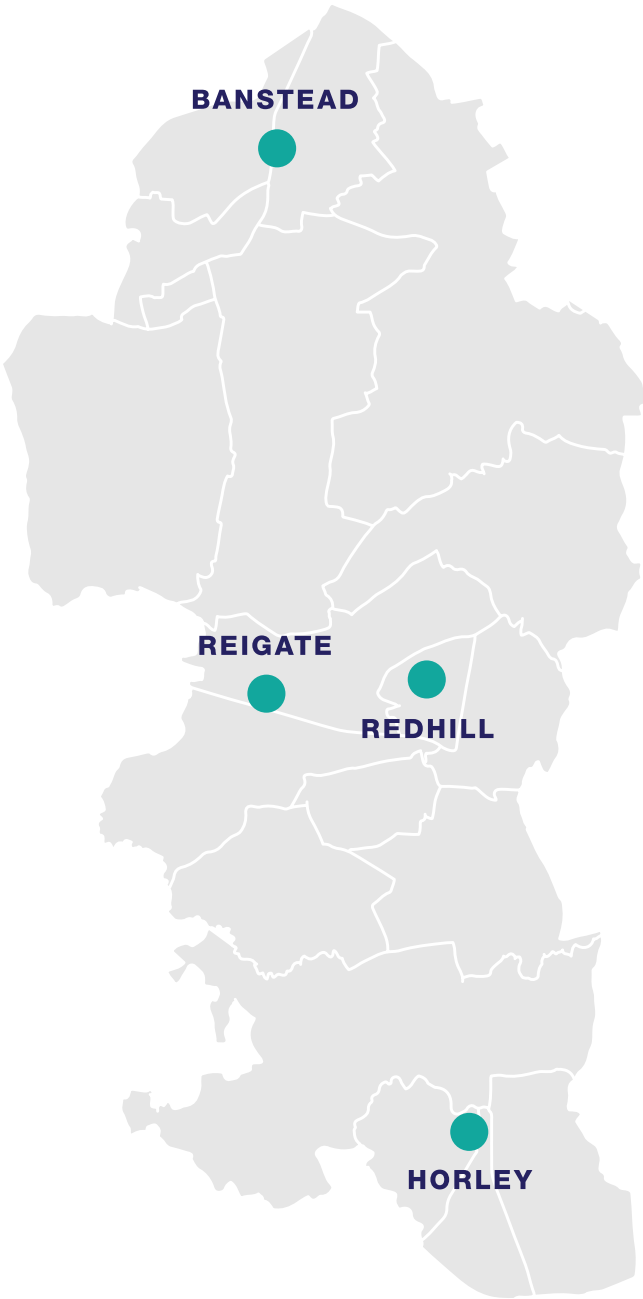
Page 5

**Community in Action**

Page 6

**Management Arrangements**

Page 7



# THE PROPOSAL

Reigate and Banstead is generally perceived to be affluent and this affects local voluntary groups ability to raise funds from National organisations. The reality is quite different. The borough has some of the most deprived Lower Super Output Areas (LSOAs) within Surrey.

We are passionate about Reigate and Banstead and want to make a difference to the communities and lives of the people who live here.

By inspiring philanthropy and developing a local fund, we aim to benefit community and voluntary groups across a range of issues, in a number of ways; building capacity, empowering and enabling community action, and developing participation.

**By making a contribution you can help to make a difference.**

## REIGATE AND BANSTEAD FUND AIMS

The aim of the Reigate & Banstead Community Fund is to increase the level of funding to support local communities by inspiring local philanthropy and creating a sustainable source of support. It also aims to build a significant level of funding which will overtime make a substantial contribution to meeting the needs of Reigate and Banstead's grassroots community and voluntary groups.

**The key objectives are to:**

- Create a sustainable fund of community capital to support and benefit local residents, community projects and voluntary groups in the Borough of Reigate and Banstead;
- Inspire local philanthropy and raise the level of giving from local residents and businesses;
- Bring together any inactive trust funds or smaller funds where they can be more effective within a larger fund;
- Make it easier for community and voluntary groups to access funding for both revenue and capital funding from a single source within the Borough.

**LOOKING FOR A MORE EFFECTIVE WAY TO SUPPORT YOUR LOCAL COMMUNITY?**

Why not contribute to a long term, sustainable Fund to support local social action and voluntary projects now and for generations to come?

**BE PART OF THE SOLUTION:**

Help us to raise **£200,000** by 30 June 2018 to maximise a pledge of **£100,000 in match** funding generously pledged by a local donor.

TYPE OF FUND

The Community Fund will consist of 2 elements:

- **Endowment Fund**  
The capital is invested and the income is paid quarterly into the ‘Grants Fund’;
- **Grants Fund**  
Any amount up to the full balance of the Fund is available for distribution as grants.


Donations to the Fund go either into the Endowment Fund to build long-term sustainable funding or into the Grants Fund to award directly as grants.

The Fund Panel can elect the percentage split for each donation. For example, 75% of each donation to the Endowment Fund and 25% to the Grants Fund. In addition, any specific requests from Donors would be met. The benefit of this strategy is that more grants can be awarded whilst the Endowment Fund is being built.

FUND CRITERIA

- Grants will fund existing services or facilities and new initiatives and projects benefiting people who live within the Borough;
- Grants will contribute to both capital costs such as funding new equipment or support on-going revenue costs;
- Specific criteria each year will reflect the current needs within the Borough and will be set and agreed by the Fund Panel. The criteria will also reflect the particular requirements of the Borough, Donors and the specific criteria of trust funds.

In East Surrey CCG, approximately

**1 in 5** 

children in reception year and over **1 in 4** children in year 6 are **overweight or obese**

BENEFITS

The Fund will:

- **Build new local resources** at a time when other sources of funding are at a premium;
- **Inspire local philanthropy** and enable local people to support local community need. Donations will be tax effective and benefit from Gift aid adding a further 25% for each donation, where applicable;
- **Provide sustainability** through a long term Fund that will grow over time, avoid the on/off nature of many other funding streams, and support communities in perpetuity;
- **Be bespoke:** The Fund is established as a separate and bespoke Fund for Reigate & Banstead based on the key priorities and criteria agreed with the Fund Panel but benefits from being part of the family of Funds within the Foundation;
- **Carefully consider allocations:** The grant award decisions are taken by the Fund Panel. The Panel will have the support, additional expertise and time of the Community Foundation’s Trustees and Grants team;
- **Be highly efficient:** Quick and easy to establish with all the grant administration managed by the Community Foundation including managing donations, gift aid, investments, administration of applications, grant awards, monitoring and evaluation and provision of reports to the Fund Panel;
- **Be compliant and follow best practice:** Compliance with all statutory and other legal and financial provisions and duties involved in managing the Fund will be the responsibility of the Trustees of the Community Foundation for Surrey as well as following best practice in matters of data protection and the security of information held electronically.

 **OVER 10%**  
of children in Reigate & Banstead **live in poverty**

The **85+** population is the **fastest growing** age group in Surrey... In Reigate and Banstead, East Surrey CCG anticipate the population will grow by 11% in the next **10 years** and the proportion aged **85 and over** will **grow 40%.**

(East Surrey CCG Health profile 2015)



# COMMUNITY FUND IN ACTION

A Panel will be created to agree how the Funds will be allocated. Key areas could include:

## PEOPLE

- **Mental health:** helping people to overcome issues and reducing long-term illness;
- **Addressing loneliness:** developing support networks and volunteering as a way of reducing social isolation;
- **Carers:** providing respite and opportunities for carers and their families;
- **Sport and Art:** encouraging participation, particularly among the vulnerable, disadvantaged and those with disabilities;
- **Domestic Abuse:** supporting projects which seek to protect and reintegrate victims.

## PLACE

- **Community led solutions:** empowering people to address need;
- **Poverty:** addressing child poverty in areas of high deprivation;
- **Homelessness:** supporting projects that provide housing and essential supplies for families in high need areas;
- **Integration:** encouraging participation in community projects to reduce social isolation;
- **Environment:** showcasing and inspiring local environmental initiatives to encourage take-up and positive changes in personal habits.

## SKILLS AND ENTERPRISE

- **Skills:** funding projects to improve numeracy, literacy, social skills and confidence;
- **Training:** providing opportunities to enable people to progress into the pathway of their choice;
- **Support:** assisting with access to counselling, debt management, job seeking, and improving parenting skills.

### POSITIVE LOCAL SOLUTIONS

**Stripey Stork** is a small local charity in Reigate and Banstead, providing practical help to families in need, by collecting good quality donated baby and children’s items which are then distributed via health visitors and other professionals. The work of this important charity can mean as much as keeping a mother and baby together, due to the provision of key health and safety items, for the well-being of the baby.

**Men in Sheds:** Edward\* felt a burden to his family and friends and unable to contribute to anything. Some mornings, Edward didn’t see the point of waking. That was until he discovered Men in Sheds, a community project for men to come together to develop their skills & interests. One item that Edward designed and hand-made, was a little wooden stool as a gift for his granddaughter. The project helped Edward to value himself and his skills and opportunities, enough to make him look forward to getting up each day.

\*Name has been changed

*These are just two examples of the type of local solutions the Fund could support – to meet local needs and make a positive difference to individuals within the borough.*

# MANAGEMENT ARRANGEMENTS

- The Community Fund will be separately identified in the books of the Community Foundation for Surrey, with all funds applied towards the Fund objectives, less agreed contributions to the Community Foundation’s costs of managing the Fund;
- The Fund will be established through a Fund Agreement which specifies how the Funds are to be used and managed;
- The Foundation will provide all the grant making support and advice including supporting grant enquiries, receiving and assessing grant applications, presenting assessed applications to the Fund Panel for decision, making the grant payments and monitoring the grant awards;
- All grant-making procedures will be in the name of ‘The Reigate & Banstead Community Fund’ and will be clearly identified as a separate Community Fund in the Community Foundation’s Annual report and Accounts and any other publications.
- The Funds will be invested in accordance with the Community Foundation for Surrey’s Investment Policy and will be held with the Community Foundation’s Investment Managers. The Investments are monitored and reviewed regularly by the Community Foundation’s Finance and Investment Group and Board of Trustees.
- The income generated from the Funds will be applied each year to award grants to support projects and activities that meet the Fund criteria of the Community Fund.
- The Community Foundation will fulfil all necessary accounting, investments, audit and reporting responsibilities, including submission to Companies House and the Charity Commission where required.



# Be part of the solution

**Local giving is needed to strengthen our communities. If this proposal has inspired you to help make a difference, please contact:**



**Laura Thurlow**

*Chief Executive at Community Foundation for Surrey*

**[laura@cfsurrey.org.uk](mailto:laura@cfsurrey.org.uk)**

**01483 478092**



**[www.cfsurrey.org.uk](http://www.cfsurrey.org.uk)**

Registered charity No. 1111600 Company Registration No 544291